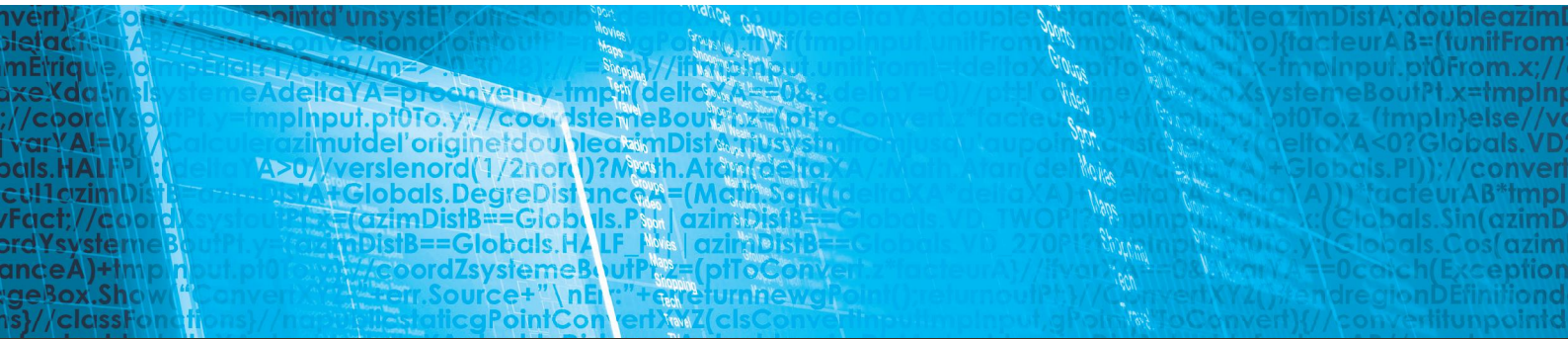


# GEOTIC LOG

Core logging and data processing

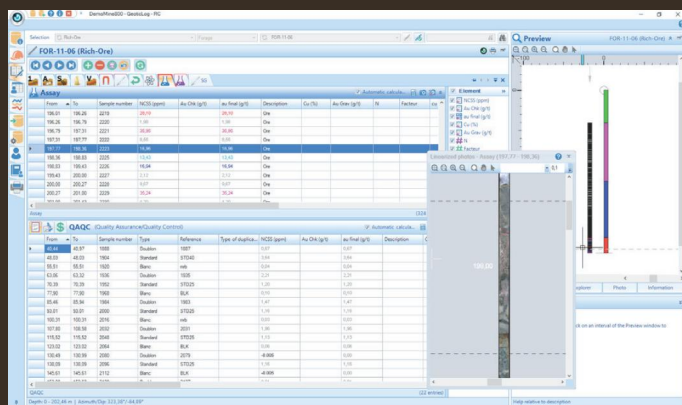


## REMOVE HUMAN ERROR • GUARANTEES THE INTEGRITY OF PROFESSIONAL DATA

**GeoticLog** is a user-friendly software developed by geologists for geologists to facilitate the capture and processing of surveys (DDHs, Outcrops, Channels and Drop Points) data in the most natural and efficient way.

- Customizable interface and data structure
- User-friendly and intuitive environment under Windows (Windows 7/later versions)
- Relational databases (Ms Access, SQL)
- Secure data sharing and synchronization
- Complete data entry validation
- Standard and personalized dictionaries
- Typical descriptions accessible by a simple click
- Description of 6 geological levels (customizable) plus RQD, magnetism, assays (QA/QC), geochemistry, oriented structures and geophysics.
- Multiples coordinate systems (conversion between systems)

- Calculation of weighted averages of zones including true, horizontal and vertical thicknesses
- Import/Export (including Gemcom)
- Printing high quality logs, generating reports
- Integration and linearization of drilling core photos
- Management of assay certificates including dates and lists of laboratories
- Allows to restrict the opening of the database in Access
- Tracing QA/QC graphs and validation of results
- Takes charge of special assay results like « tr », « < », « nil », etc.
- Personalized tables
- Calculated fields
- Planning and monitoring of drilling campaigns



Direct access to **GeoticGraph's** section creation wizard to create sections and plan views or export them to other applications.

SQL databases can be linked directly into **GeoticMine** to model, interpret, plan, create section books and much more.

**GEOTIC : ensuring knowledge's continuity**